

JVL

ECL-10

HOME

USER MANUAL



Table of contents

ECHO AT Home.....	3
WELCOME.....	5
INTRODUCTION.....	6
GAMES — INTERFACE.....	9
SET-UP AND ADJUSTMENTS.....	14
ACCESS CONTROL.....	30
ALL GAMES.....	34
FACTORY SETTINGS.....	36

ECHO AT Home

User Manual

This manual describes the product and software regarding the Echo HD casual game touchscreen countertop for home use. No part of this manual, including the products and software described in it, may be reproduced, transmitted, transcribed, stored in a retrieval system, or translated in any language in any form or by any means, except documentation kept by the purchaser for backup purposes, without the express written permission of JVL Labs Inc. ("JVL").

Product warranty or service will not be extended under the following conditions:

- The product has been repaired, modified, or altered, unless such repair, modification, or alteration was authorized in writing by JVL.
- The serial number of the product is detached or missing.

JVL PROVIDES THIS MANUAL "AS IS" WITHOUT WARRANTY OF ANY KIND, EITHER EXPRESS OR IMPLIED, INCLUDING BUT NOT LIMITED TO THE IMPLIED WARRANTIES OR CONDITIONS OF MERCHANTABILITY OR FITNESS FOR A PARTICULAR PURPOSE. IN NO EVENT SHALL JVL DIRECTORS, OFFICERS, EMPLOYEES, OR AGENTS BE LIABLE FOR ANY INDIRECT, SPECIAL, INCIDENTAL, OR CONSEQUENTIAL DAMAGES (INCLUDING DAMAGES FOR LOSS OF PROFITS, LOSS OF BUSINESS, LOSS OF USER DATA, INTERRUPTION OF BUSINESS AND THE LIKE), EVEN IF JVL HAS BEEN ADVISED OF POSSIBILITY OF SUCH DAMAGES ARISING FROM ANY DEFECT OR ERROR IN THIS MANUAL OR PRODUCT.

SPECIFICATION AND INFORMATION CONTAINED IN THIS MANUAL ARE FURNISHED FOR INFORMATIONAL USE ONLY, AND ARE SUBJECT TO CHANGE AT ANY TIME WITHOUT NOTICE, AND SHOULD NOT BE CONSTRUED AS A COMMITMENT BY JVL. JVL ASSUMES NO RESPONSIBILITY OR LIABILITY FOR ANY ERRORS OR INACCURACIES THAT MAY APPEAR IN THIS MANUAL, INCLUDING THE PRODUCTS AND SOFTWARE DESCRIBED IN IT.

JVL reserves the right to make changes to this manual and the product it describes, at any time.

Products and corporate names appearing in this manual may or may not be registered trademarks or copyrights of their respective companies, and are used only for identification and the owners' benefit, without intent to infringe.

Safety Information

1. Read Instructions: Read these instructions before proceeding with the installation and operation of the product.
2. Heed Warnings: Follow all warnings on the product and in the operating instructions.
3. Overloading: Do not overload wall outlets or extension cords. This can result in fire or electric shock.
4. Object and Liquid Entry: Never push foreign objects into this product through openings as they may touch dangerous voltage points that could result in a fire or electric shock.
5. Servicing: It is dangerous to service this product yourself. Refer to qualified service personnel.
6. Replacement Parts: When replacement parts are required, use only replacement parts specified by the manufacturer.
7. Safety Check: Upon completion of any service or repairs to this product, ask the service technician to perform safety checks to determine that the product is in proper operating condition.

Additional Safety Information for the User

Verify Line Voltage Before Use: Your JVL machine has been designed for use with 115/230V 60/50Hz AC current. Connection to another line voltage can create a safety hazard. If you have any questions about the voltage requirements, contact your local distributor.

WARNING:

To prevent fire or shock hazard, do not expose this appliance to rain or moisture. It has been designed for indoor operation only.

The appliance is not suitable for installation in an area where a water jet would be used. The appliance must not be cleaned with a water jet.

If the supply chord is damaged, it must be replaced by a special chord available from the manufacturer or its service agent, or the same type as the original.

Changes or modifications not expressly approved by JVL Labs Inc. could void the user's authority to operate the equipment.

NOTE: *This equipment has been tested and found to comply with the limits for a Class A digital device, pursuant to Part 15 of the FCC Rules. These limits are designed to provide reasonable protection against harmful interference when the equipment is operated. This equipment generates, uses, and can radiate radio frequency energy and, if not installed and used in accordance with the instruction manual, may cause harmful interference to radio communications. Operation of this equipment in a residential area is likely to cause harmful interference in which case the user will be required to correct the interference at his/her own expense.*

If you require any assistance, please contact JVL Technical Support at: support@jvlhome.com.

WELCOME

Thank you for purchasing the JVL ECHO – the world's first and only HD casual game touchscreen countertop!

A technological tour de force, Echo is the only countertop of its kind to feature a high-definition (HD) monitor, a state-of-the-art 3D graphics processor, and a five-speaker hi-fi sound system.

Immerse yourself in a three-dimensional world that engages your senses with razor sharp images, crystal clear sound, and an unrivalled entertainment experience. Glide through Echo's intuitive Graphical User Interface (GUI) for access to 149 different games encompassing every genre, from action and strategy, to cards, quizzes and puzzles - something to satisfy any and all tastes.



INTRODUCTION



DIMENSIONS

Height: 18.5" Width: 19.5" Depth: 15" Weight: 39.4 lbs

FEATURES

- Razor sharp 22" 16:9 high-definition touchscreen LCD with 1680 x 1050 Pixel Resolution
- Crystal clear 25-watt, 4-speaker high-fidelity, triband sound system with built-in subwoofer
- High performance game board with dedicated 3D hardware engine
- Dynamic Graphical User Interface (GUI)
- High-speed 4GB Secure Digital (SD) storage media
- Plug and Play out of the box — Set up and customizable features are quick and simple to configure
- No power pad, no buttons, no moving parts...no problems
- Super clean, perfectly synthesized hardware means state-of-the art cabinet design with no messy wires, no bulky parts
- Advanced security features
- Uncompromised, trusted JVL quality!

POWERING UP



1. Firmly insert the socket end of the power chord into the cabinet power inlet. It is located beside the on/off switch at the rear of the Echo machine. Plug the other end of the power chord into a standard AC outlet. Use only the power chord supplied with the machine.
2. The Echo machine must be grounded. Do not use a cheater plug.
3. JVL recommends installing the Echo machine with an external surge suppressor with a built-in circuit breaker. Surge suppressors are available at most hardware and electrical supply stores.

The Echo machine requires a few minutes to power-up while the system carries out extensive system diagnostic checks. If problems are detected, please see "Troubleshooting Guide" (on page 20) or contact JVL Technical Support at: support@jvlhome.com.

Although the Echo machine has been preset and is ready for play, it is recommended that a user run initial tests (i.e. calibrate the touchscreen) and review the Setup options for custom configuration. For more information, see "Setup and Adjustments" commencing on page 44.

3D GRAPHICAL USER INTERFACE

The Echo machine is equipped with an industry-first, full 3D GUI (Graphical User Interface) which displays the following functionalities:

- Task Bar
 - Category/Games Selection
 - o Hall of Fame
 - o Preview
 - o How to Play

TASK BAR

The “Task Bar” menu is located at the bottom of the GUI, and displays the following sections:

- Info button
- Available Credits/Free Play window
- Language selection button (English, Spanish, and French are supported)



Info

When “Info” is prompted, a popup screen will appear with the following options:

- About JVL – information about JVL Labs Inc.
- Demo – will initiate the demo loop – an animated sequence of game previews
- Acknowledgements – contains references to licenses and rights

Note: The old JVL Corporation address is shown in the Info sections – new JVL Labs Inc. address is: 181 Whitehall Lane, Markham Ontario, Canada, L3R 9T1.

Available Credits/ Free Play Window:

Echo for home use is preset to “Free Play”. If for any reason, this mode is not enabled, please refer to the “Credits” section on page 53 for instruction on how to set the machine to “Free Play”.

Languages

This button will prompt a popup with the available languages. When a desired language is selected, the system will auto-generate game play in that language.

Note: English, Spanish, and French are supported.

GAMES — INTERFACE

SCROLLING GAMES LIST

The Echo countertop has been designed in a widescreen format to offer navigational simplicity by way of a touchscreen game selection “scroll” menu.



This allows the user to “touch and drag” the Game Tablets, left to right, and vice versa. Once the selected game is highlighted in the center position, the “Play” button will be displayed. Click “Play” to initiate a game.



“Play” Button

HALL OF FAME

The “Hall of Fame” is displayed at the end of a play for all games and compares scores of every previous play for that game. The “Hall of Fame” is only triggered if the score for that play succeeds as a “Top 10 High Score” measured against all other scores for that particular game. If a “High Score” is achieved, a keyboard is prompted whereby the user can enter a name to be posted on the “Hall of Fame”.



Hall of Fame – After Game

The “Hall of Fame” can also be viewed within the game selection menu (GUI) by tapping the “Hall of Fame” icon located in the top, left corner of each title’s Game Tablet.



Hall of Fame Button

When selected, the “Hall of Fame” feature will appear, for 1 minute and display the following:

- Hall of Fame ranking list (1 to 10)
- Game Tablet
- Hall of Fame crystal

The “Hall of Fame” feature can be interrupted by tapping the Game Tablet, or by selecting a game category.



Hall of Fame – Prompted

PREVIEW GAMES

All games offer a “Preview”, located in the top, center section of each title’s Game Tablet. A “Preview” is a 15-second animated sneak peek of that particular game.

Click the “Preview” button to prompt the animation.

A “Preview” can be interrupted by tapping the screen.



Game Tablet - “Preview” button

HOW TO PLAY

All games offer a “How to Play” function that describes game rules, explains objectives, and shares useful hints, accessed in the top right corner of each title’s “Game Tablet”. Click the “How To Play” button to prompt this instruction feature/animation. “How To Play” can be interrupted by tapping the screen.



“How to Play” button

GAME CATEGORIES

With 149 different games to choose from, encompassing every genre, from action and strategy, to cards, quizzes and puzzles, the Echo offers something to satisfy every interest and mood.

The games are subdivided into categories:

- Action
- Cards
- Puzzle
- Strategy
- Quiz
- Classic
- New Games

Game category icons are located at the bottom of the GUI screen and become animated when activated. Each category features games with corresponding themes. Games and game categories can be enabled/disabled in Setup.



Game Categories

SET-UP AND ADJUSTMENTS

OVERVIEW

Access to all machine settings (Operator Dashboard/Setup) can be carried out in two ways:

- Touchscreen Access: tapping the top, left corner of the touchscreen 5 consecutive times and inserting a User PIN

Note: IT IS HIGHLY RECOMMENDED THAT USERS USE THIS METHOD TO PROMPT THE OPERATOR DASHBOARD/SETUP FUNCTION.

- Setup Button: pressing the yellow "Setup" button once, located in the top, left corner of the machine, behind the rear cabinet door.



Setup Button



Touchscreen Access

Note: The "Setup" button also enables the calibration screen test. If for any reason the touchscreen is not functioning properly, a calibration test can be performed by pressing the "Setup" button twice which will immediately prompt this function.

Note: "Sections" are displayed as vertical columns on the left side of the screen, sub-divided into "Tabs", running horizontally at the top of the screen, used to configure game/machine settings.

SETUP: CATEGORIES AND TABS



General — Basic settings for the Echo machine: General (general configuration options); International (selecting “Default” and “Setup” Language, enabling/disabling user selectable/ supported languages); and Copyright information.

Note: please disregard the following functions in each Tab:

General: Show \$ Sign in Games

General: Allow Show Mode

General: Enable Music

General: #1 Free Game

General: Sign in Without Tournaments

International: User Selectable Languages (English, Spanish, and French are supported)

Note: Copyright: The old JVL Corporation address is shown – new JVL Labs Inc. address is: 181 Whitehall Lane, Markham Ontario, Canada, L3R 9T1.

Games — Settings for: Hall of Fame (reviewing Hall of Fame statistics by Category/Game — option to clear all data); and Game Categories (enabling/disabling games)

Credits — Settings for play credits and Free Play: Manage (enable Free Play)

Note: please disregard the following Tabs/functions within each Tab:

- Manage: Maximum Credits
- Credit Rate: entire Tab
- Game Prices: entire Tab
- Tournament/Music Prices: entire Tab

System — Settings for management, testing and controlling the operation and various functions of the terminal: System Info (controlling internal temperature, fan speed, and monitoring of system components); Volume (adjusting volume, enabling/disabling subwoofer); Display (adjusting display settings such as brightness and color gamma, enabling/disabling Auto-dim, calibrating and testing touch screen function); Lights (enabling/disabling of marquee color and effects); Date/Time (reviewing/setting the current date and time); Monitoring (reviewing, enabling/disabling Door Monitoring and data, reviewing/performing Battery Diagnostic)

Note: please disregard the following Tabs/functions within each Tab:

- Coin/Bill Acceptor: entire Tab
- Power Pad: entire Tab
- Event Log: entire Tab
- Test Flash: entire Tab

Access control — Security settings: Advanced Security Settings (enabling/disabling Advanced Security, setting up access code); Machine Users (offering/restricting Setup access, rights of use, and limits for other users)

Note: please disregard the following Sections altogether:

Network

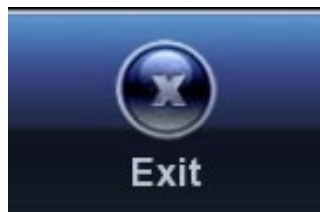
Collection

Reports

Tournaments

Advertisements

To return to the main "GUI" (Graphical User Interface) screen/play mode, use the "Exit" button located in the upper right corner of the screen.



GENERAL

GENERAL TAB



General — general configuration options

Prohibit Bad Words — when enabled (check-marked), the system will not allow players to enter obscene words in the “Hall of Fame” or in any registration process.

Enable Games — when check-marked, Games are enabled (removing the check-mark will disable games)

INTERNATIONAL TAB

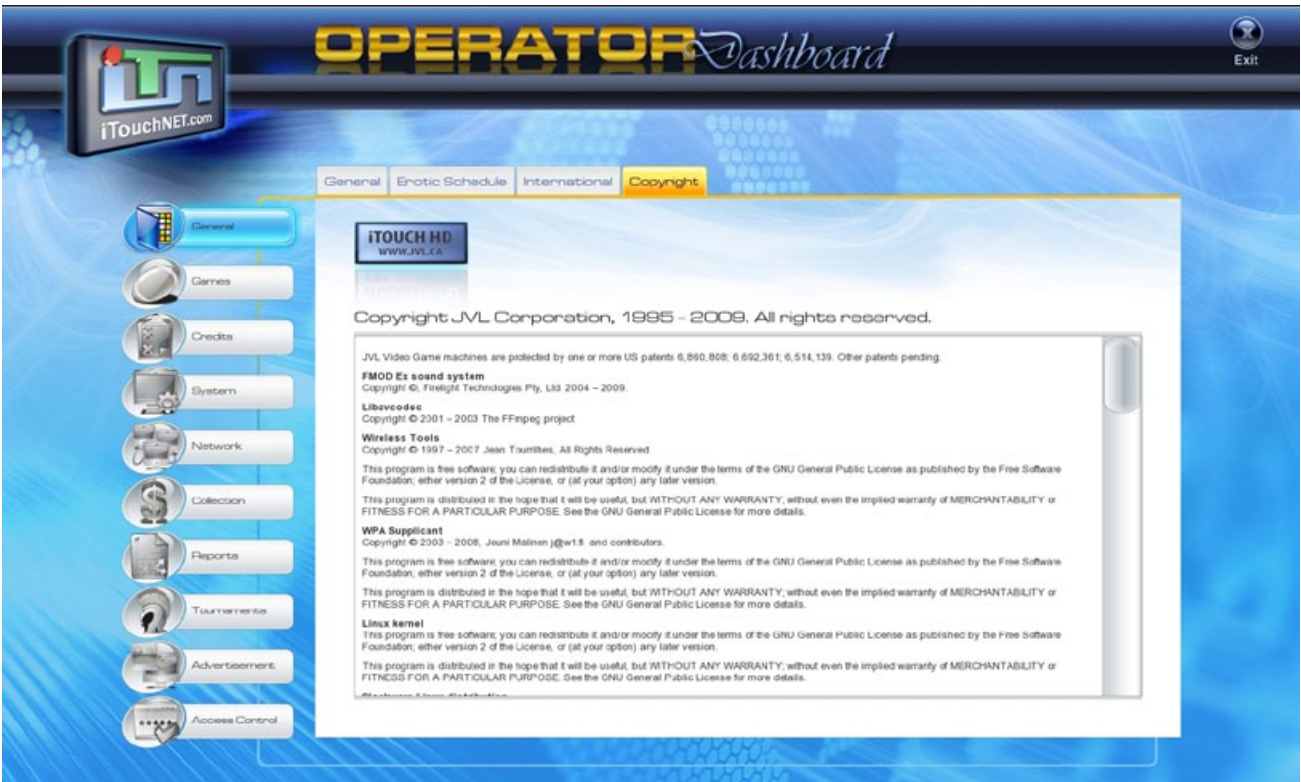


International — selecting “Default” and “Setup” Language, enabling/disabling user selectable/ supported languages

- **Setup Language** is the language used within Setup.
- **Default Game Language** is the language in which all the games will be played.

Note: English, Spanish, and French are supported.

COPYRIGHT TAB

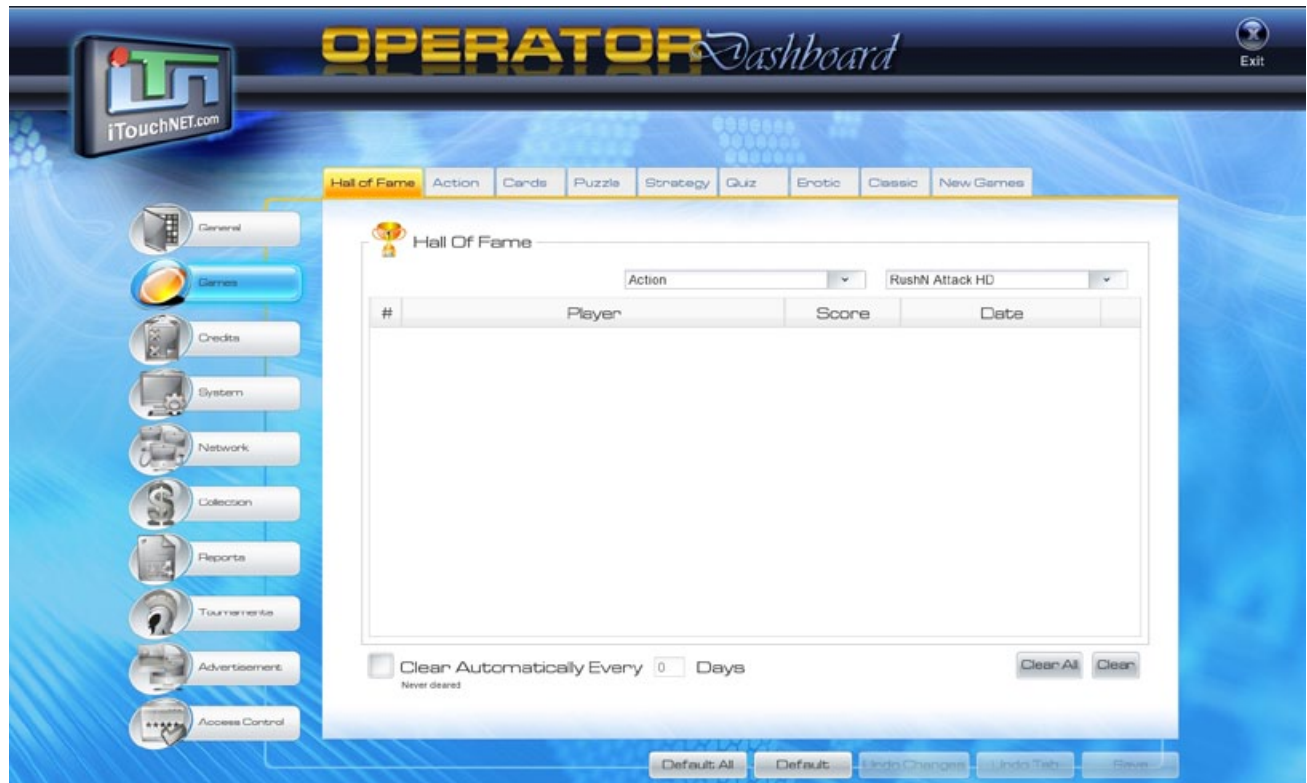


Copyright — displays detailed JVL Labs copyright information.

Note: Copyright: The old JVL Corporation address is shown – new JVL Labs Inc. address is: 181 Whitehall Lane, Markham Ontario, Canada, L3R 9T1.

GAMES

HALL OF FAME TAB



Hall of Fame — reviewing Hall of Fame statistics by Category/Game – option to clear all data.

To clear statistics by game, first select the Category in which the game appears in, then highlight the game. Use the “Clear” button to erase the data.

To instantly clear all statistics within the Hall of Fame (HoF), press the “Clear All” button. Once pressed, a window will be displayed asking for confirmation. Upon pressing the “Yes” button, all Hall of Fame (HoF) statistics will be erased.

The clearing of Hall of Fame (HoF) statistics can be scheduled to occur automatically by enabling (check-marking) the “Clear Automatically Every # Days” box and programming the desired number of days between auto-clears, using the popup keypad. Hall of Fame statistics will not be cleared if the value is set to zero. The time and date related to when the Hall of Fame was last cleared is displayed at the bottom of the screen.

(GAME CATEGORY) TABS

(Game Categories) — enabling/disabling of games.

These Tabs allow the user to control which games/categories are available for play. To see a complete listing of all games with descriptions, visit: www.jvlhome.com.

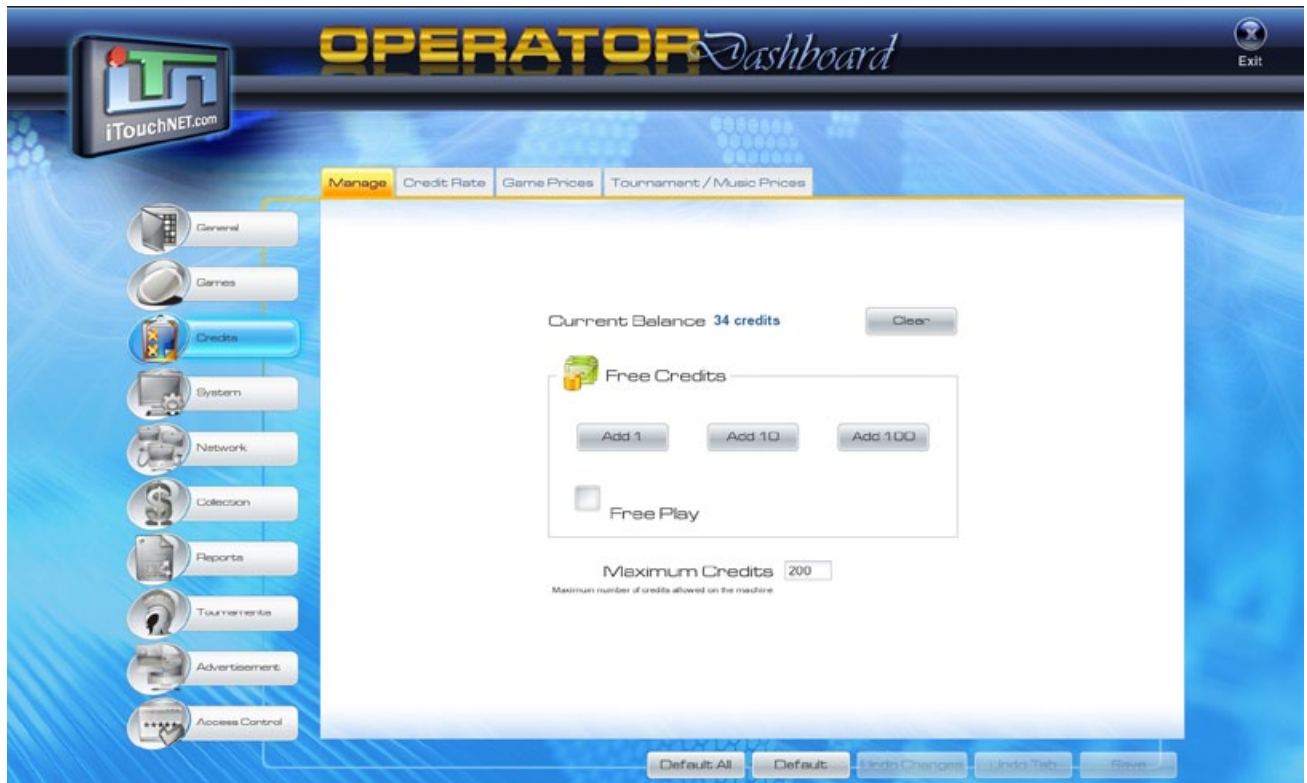
The function of enabling/disabling games is done by selecting/unselecting checkboxes in the "Enabled" column. Enabled games will be indicated by a check-mark. Select the Tabs at the top of the screen to navigate games by category.

Select All — enables all games within that Tab/category.

Deselect All — disables all games within that Tab/category.

CREDITS

MANAGE TAB



Manage — settings for play credits and Free Play: Manage (enable Free Play)

Free Play — when enabled (check-marked), games can be played continuously, without money/credits.

SYSTEM

SYSTEM INFO TAB

The screenshot displays the 'Operator Dashboard' interface for iTouchNET. The 'System Info' tab is selected, showing a navigation menu on the left with options like General, Games, Credits, System, Network, Collection, Reports, Tournaments, Advertisement, and Access Control. The main content area is divided into several sections:

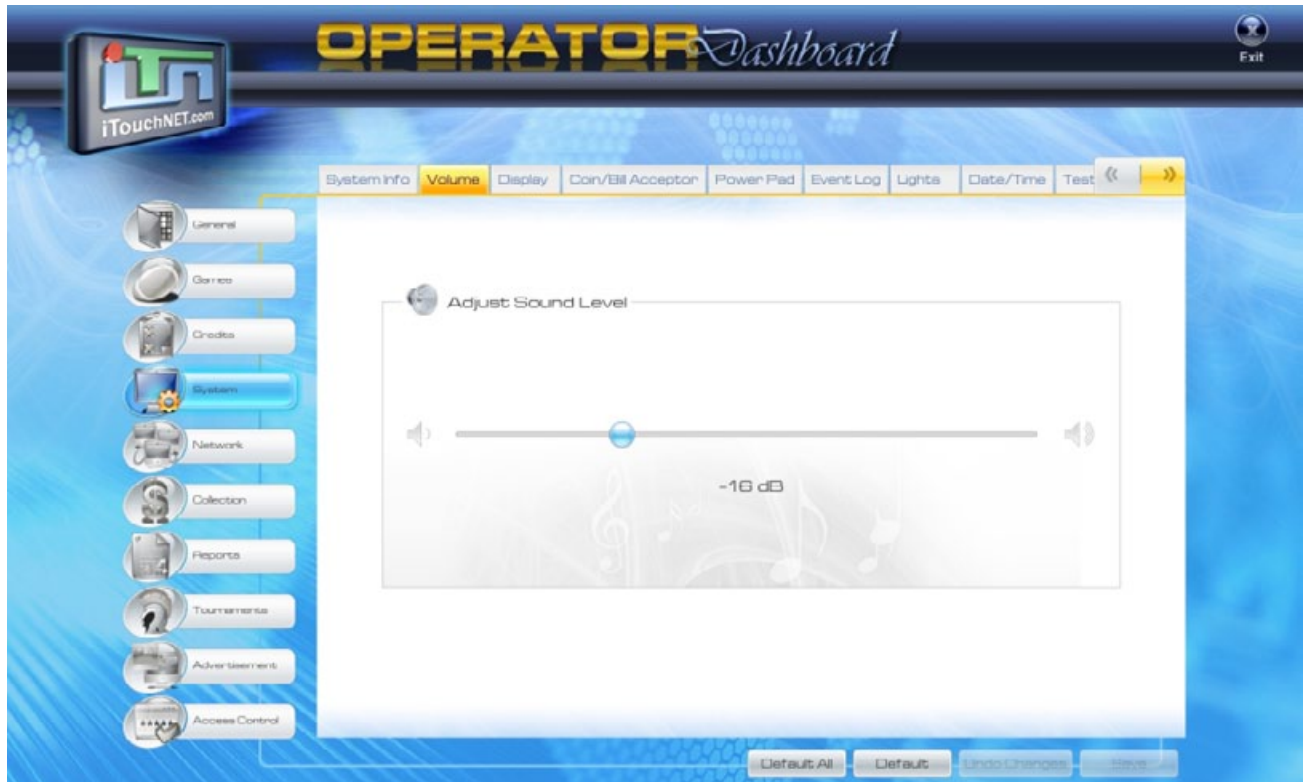
- Temperature:**

CPU	115 F / 46 °C
GPU	131 F / 55 °C
Cabinet	109 F / 43 °C
- Fan Speed:**

CPU	5273 rpm
GPU	5152 rpm
Cabinet	4800 rpm
- System Status:** A green checkmark icon indicates 'All system components are operating normally'.
- Hardware Specifications:**
 - Software:** JVL iTouch HD2 v 1.0b-16.179 - 1 - 2009-11-13
 - IO Board:** ID: 00000021EF49 || MCU: 3.05 || COPROC: 3
 - Game Board:** JP70 || ID: 000013A8CB01 || BIOS: A18.2F.0
 - Power Pad:** JVL POWERPAD CT9 || ID: 2CB496120000 || FW: 1.02
 - Activation Key:** HD2 000002401793
 - Total RAM:** 926 MB
 - Processor:** Intel(R) Celeron(R) M CPU 440 @ 1.86GHz
 - Flash Memory:** 4 GB
 - Video:** ATI Technologies Inc Radeon E2400
 - Audio:** Intel Corporation 82801G (ICH7 Family) High Definition Audio Controller (rev 02)
 - Ethernet:** Realtek Semiconductor Co., Ltd. RTL-8139/8139C/8139C+ (rev 10)
 - Wireless:** USB Wireless Adapter

System Info — reviewing overall function of the machine (control of internal temperature, fan speed, and monitoring of system components).

VOLUME TAB



Volume — adjusting volume, enabling/disabling subwoofer.

Slide the volume indicator by using the scroll function, left-right to the desired dB (decibel) level. The "Default" sound level is -16dB.

DISPLAY TAB



Display — adjusting display settings such as brightness and color gamma, enabling/disabling Auto-dim, calibrating and testing touchscreen function.

On the right side of the screen is the Test Display, which shows a set of visual aids to help in the adjustment of the display settings such as brightness, contrast, vertical/horizontal picture centering, and size:

Enable Monitor Auto-dim — when enabled, monitor brightness is automatically set to Dim.

Note: enabling Auto-dim will disable brightness presets.

There are 3 auto-dim presets available:

- **Vivid:** brightest
- **Normal:** median brightness – standard setting
- **Dim:** softest

Calibrate Touchscreen — select “Calibrate Touchscreen”. A test screen will appear, with instruction to complete a “4-points” configuration procedure (touching and releasing consecutive on-screen targets to affirm accuracy in touchscreen function). After each target is pressed, a “+” sign will appear, followed by another corner-target (total of 4) as verification to proceed. A final message “Done” will flash if proper calibration was successfully achieved, prompting a return to the “Display” Tab Setup page.

Calibration Test — select “Calibration Test”. A quick test performed by drawing across the test screen to confirm touchscreen accuracy and sensitivity. Pressing the target in the upper right corner of the screen prompts a return to the “Display” Tab Setup page.

LIGHTS TAB



Lights — enabling/disabling of color and effects.

Adjust color, brightness, and behavior of marquee light effects. Light intensity and functionality can be customized for game play and for demonstration modes.

Default Color: select and adjust marquee light color using the scroll function (default is set to blue, but can be set to green, or red, or a blend of colors).

Note: Enabling the “Link Color Sliders” will lock the scroll positions of the red, green, and blue sliders.

Dim while Playing — when enabled (check-marked) the marquee light intensity is reduced by 35% while the machine is in use.

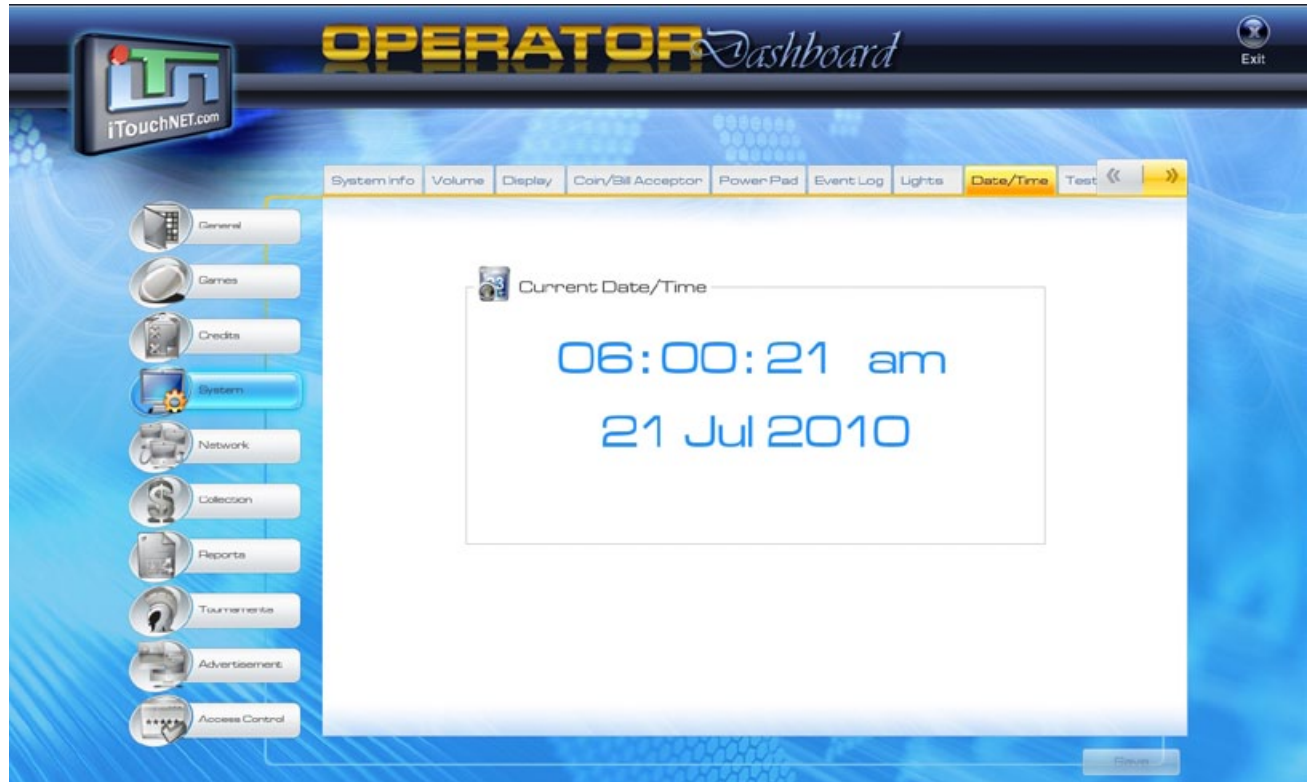
Dim in Demo — when enabled (check-marked) the marquee light intensity is reduced by 35% while the machine is in demo mode.

Light Effects: when enabled (check-marked) the marquee “Light Effect” is activated.

Brightness — Adjusts the brightness of the marquee lights.

DATE/TIME TAB

WARNING: The “Current Date and Time” must be accurately set for proper operation of time-controlled features within the system.



Date/Time — reviewing/setting the current date/time.

Note: Manually change the time by clicking on the hour, the minute, or the second sections which increase each by 1. Manually change the date by pressing the digitally displayed day-month-year, which will prompt a calendar popup. Select the corresponding date (recommendation to select the actual date).

****VERY IMPORTANT:** IT IS HIGHLY RECOMMENDED THAT THE DATE IS ACCURATELY SET IN THE EVENT THAT AN ACCESS CODE/PIN IS FORGOTTEN. THE ONLY WAY TO RE-ENTER GAME PLAY/ SETUP WITHOUT THIS ACCESS CODE/PIN IS TO CONTACT JVL SUPPORT AT: support@jvlhome.com FOR ASSISTANCE. THE INFORMATION DISPLAYED IN THE UPPER, RIGHT CORNER OF THE “ENTER OPERATOR PIN” SCREEN WILL BE USED AS REFERENCE TO “UNLOCK” THE MACHINE.

MONITORING TAB



Monitoring — reviewing, enabling/disabling Door Monitoring and data, reviewing/performing Battery Diagnostic.

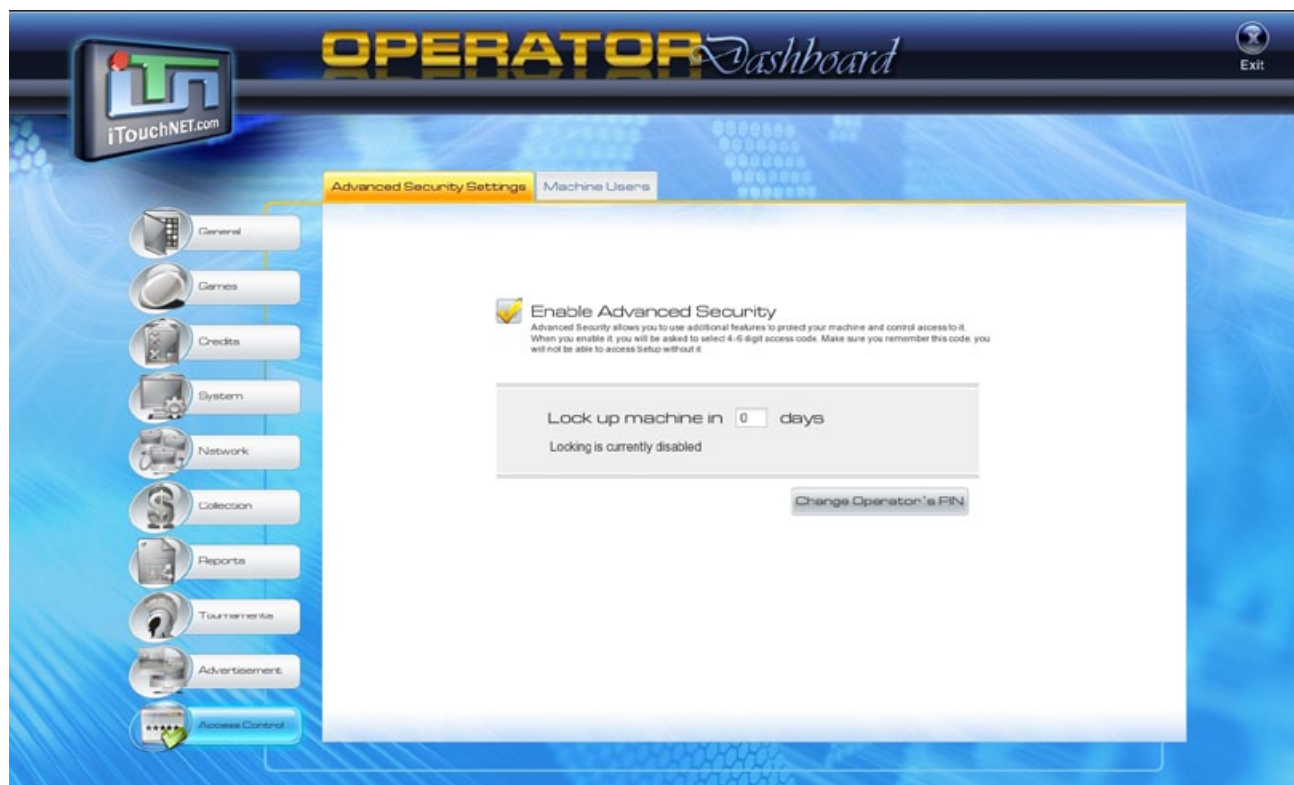
Enable Machine Locking on Door Opening — when enabled (check-marked), the system will not allow access to game play after an “open door event” is registered (rear cabinet door was opened and again closed) without entering a user PIN. To bypass the yellow warning screen, the Setup button must be pressed and a valid PIN entered.

Battery Diagnostic: When enabled (check-marked), the system will warn of “low power” of the interface board battery, by prompting an automatic warning message. The feature displays the current battery’s voltage and one of the following statuses:

- **Normal:** Green indicates that battery status is normal.
- **Close to low:** Yellow indicates that battery status is close to low.
- **Low:** Red indicates that battery status is low.

ACCESS CONTROL

ADVANCED SECURITY SETTINGS TAB



Access control — review security settings, specifically enabling/disabling Advanced Security and setting of access code(s); offering/restricting Setup access, rights of use, and limits for other users.

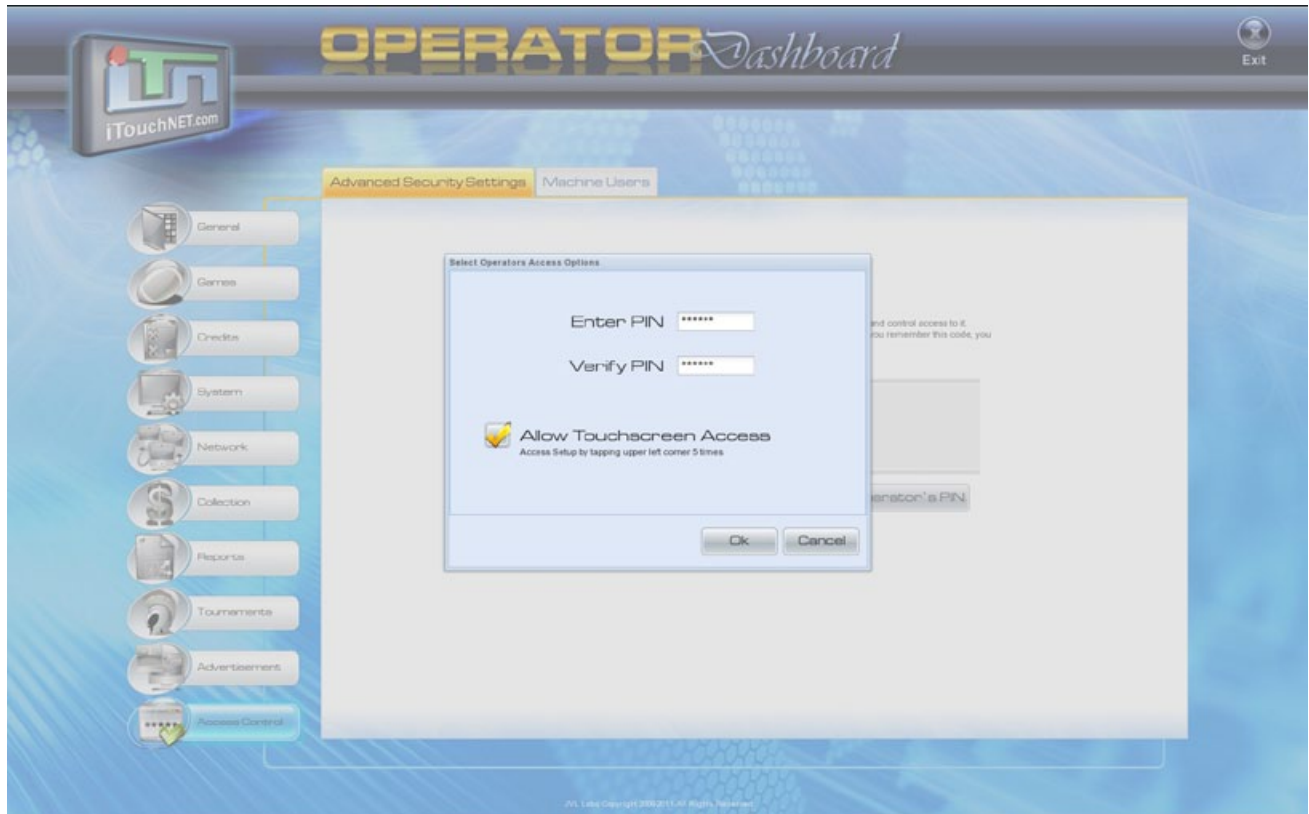
Access Control serves to restrict and control access to sections within Setup

Enable Advanced Security: When enabled (check-marked), the system will control and prevent Setup accessibility to anyone without a 4-6 digit access code/PIN.

Note: The “Change Operator’s PIN” button can be used to amend this 4-6 digit access code.

Lock up machine in — For security reasons, the user may choose to enable this option, which will prevent the machine from functioning after the set number of days. In this case, the machine will lock (stop operating), and prompt a request for the 4-6 digit access code/PIN to be entered.

Note: Be sure to remember the access code/PIN as future access to **Setup** will only be granted with that access code/PIN. THE ONLY WAY TO RE-ENTER GAME PLAY/SETUP WITHOUT THIS ACCESS CODE/PIN IS TO CONTACT JVL SUPPORT AT: support@jvlhome.com FOR ASSISTANCE.



Allow Touchscreen Access — When enabled (check-marked), Setup can be accessed by tapping the top, left corner of the touchscreen 5 consecutive times.

Note: IT IS HIGHLY RECOMMENDED THAT USERS USE THIS METHOD TO PROMPT THE OPERATOR DASHBOARD/SETUP FUNCTION.

MACHINE USERS TAB



Machine Users — grant access to additional users, and establish parameters of access.

Click the “Add” button to prompt a popup screen and manage the following:

Account Info

Alias — name allocated to user for security access.

Allow Touchscreen Access — when enabled (check-marked), the user is granted access to Setup by tapping the top, left corner of the touchscreen 5 consecutive times.

Allow Key Access — when enabled (check-marked), the user is granted access to Setup by opening the rear cabinet door and pressing the Setup button.

Note: Disregard “Tournament Attendant”

Access Rights — establishes the type and level of Alias access.

Note: Disregard “Limits”



There are three possible permission options for Alias access to specific/all Setup Sections (located in the vertical "Touchscreen" column – tap button to scroll through each):

Off — disables all access, specified menu tab is removed while Alias is in Setup.

View — Tab contents can be viewed, but the ability to modify settings within the Tab is disabled.

Modify — Alias has full access to modify the Tab settings.

Note: Disregard "Limits"

ALL GAMES

ACTION

Air Hockey	Count Your Fingers	Gone Karting	Shuffleboard Galleon
Beach Volleyball	Crazy Quarters	Gone Snowboarding	Silver Cue
Block'em Up	Cricket	Hooked On Fishing	Slap Shot
Bonbon Deluxe Classic	Darts	Knock Out	Soccer
Bonbon Deluxe Survival	Done Drinking	Magic Hoops	Starbugs
Bonbon Factory	Fast Food	Mmm...Munchies	Street Racing
Bonbon Hard Candy	Golden Cue	Monkey Around	Tennis
Bubble Up	Gone Bowling	Monster Mash HD	The Wall
Bumper Wars	Gone Eggstreme	Monster Truck HD	Xtreme Racing
Candy Store	Gone Fishing HD	Pinball	
Cash Hungry	Gone Ice Fishing	Shoot The Monkey	

CARDS

Black Jack	Hi Lo	Pyramid Runs HD	Texas Hold'em No Limit HD
Classic Solitaire	Jokers Wild	Racing11's	Texas Kill'em
Draw Poker	Loco 8's	Royal Hands	Texas Showdown
Elevens	Pick 2	Slot 21	Thirty-One
Flush 21	Pick 21	Suits & Pairs	Triple Towers
Free Cell	Pick 3	Taipei Towers	
Heart Attack	Power Towers	Texas Hold'em Limit Poker	

PUZZLE

Color Drops	Matching Pairs	Rush Hour	Treasure Match
Eye Twister	Mine Sweeper	Seat 21	Underwater Mess
Fortune Taipei HD	Mission Impossible	Shanghai	What A Mess
Free Cell	Number Run	Solitaire Rock	What's The Difference? HD
Jigsaw Puzzle	PicSonix	Sudoku	Wild Dice HD
Last Call	Runaway	Treasure Hunt HD	Zoozzle HD

STRATEGY

2 Tacki	Blocks	Lines	Sum Fun
Backgammon	Color Invasion	Pegged	Tacki
Ball Trix	Cosmi Checkers	Pirate Madness HD	Tacki 3
Balloon HD	Domino	Prison Break	Three Color
Battle Ships	Getta Line	Realty Tycoon	Tik-Tak-Toe
Big Tacki HD	Join 11	Reversi	Virus Attack
Bingo Star	Kick 11's HD	Squax	

QUIZ

At A Glance	Double Quiz Sports	Type-O-Phrase	Word Chase
Clock Teasers	Hot Links	Word Builder	
Double Quiz Entertainment	Magic Spell	Word Master	
Double Quiz HD	Pig Latin	Word Maze	

FACTORY SETTINGS

Performing A Factory Reset

A “Factory Reset” is a process that restores the machine to “default factory settings” (the settings that were programmed, out of the box, when the machine was first activated).

Users will configure the various areas within Setup to suit their particular needs. These settings can be modified at any time by entering Setup and selecting the corresponding function that is to be amended, by Section and Tab.

A “Factory Reset” would be performed in an instance where the user would prefer to erase all programmed settings in a particular Section/all Sections at once, and begin the Setup process from scratch.

The following is a step-by-step process on how to perform a “Factory Reset”.

Note: Internal access to the Echo cabinet is required.

Step 1:

Turn OFF the Echo machine by clicking the Power button in the back bottom right corner of the machine to “O” (off).

Step 2:

After 5 seconds, turn the machine back ON by clicking the Power button in the back bottom right corner of the machine to “I” (on).

Step 3:

A few seconds after turning the machine “On”, a “Loading Screen” will appear, and begin scanning the system. When this Loading Screen appears, click the yellow Setup button located in the top left corner of the machine, behind the rear cabinet door, which, after a few seconds, will trigger the “Factory Reset Requested” main screen.



Loading Screen



Setup Button

Step 4:

Once the “Factory Reset Request” screen appears, you will notice that all Section boxes in the “Select the data to keep” are check-marked. A “Factory Reset” will only be performed on Sections without check-marked boxes. Once it is determined which Section’s data is to be permanently deleted, click the yellow Setup button once more to begin the “Factory Reset” process.



Factory Reset Screen

Step 4.1:

“Factory Reset In Progress” will appear on a subsequent screen, and within seconds, the process of clearing Setup data will occur, and the machine will be ready for new setting configuration.



Factory Reset in Progress

Step 5:

Once this process is complete, the machine will reboot automatically to the game selection GUI (Graphical User Interface). A “Factory Reset” has been successfully completed.